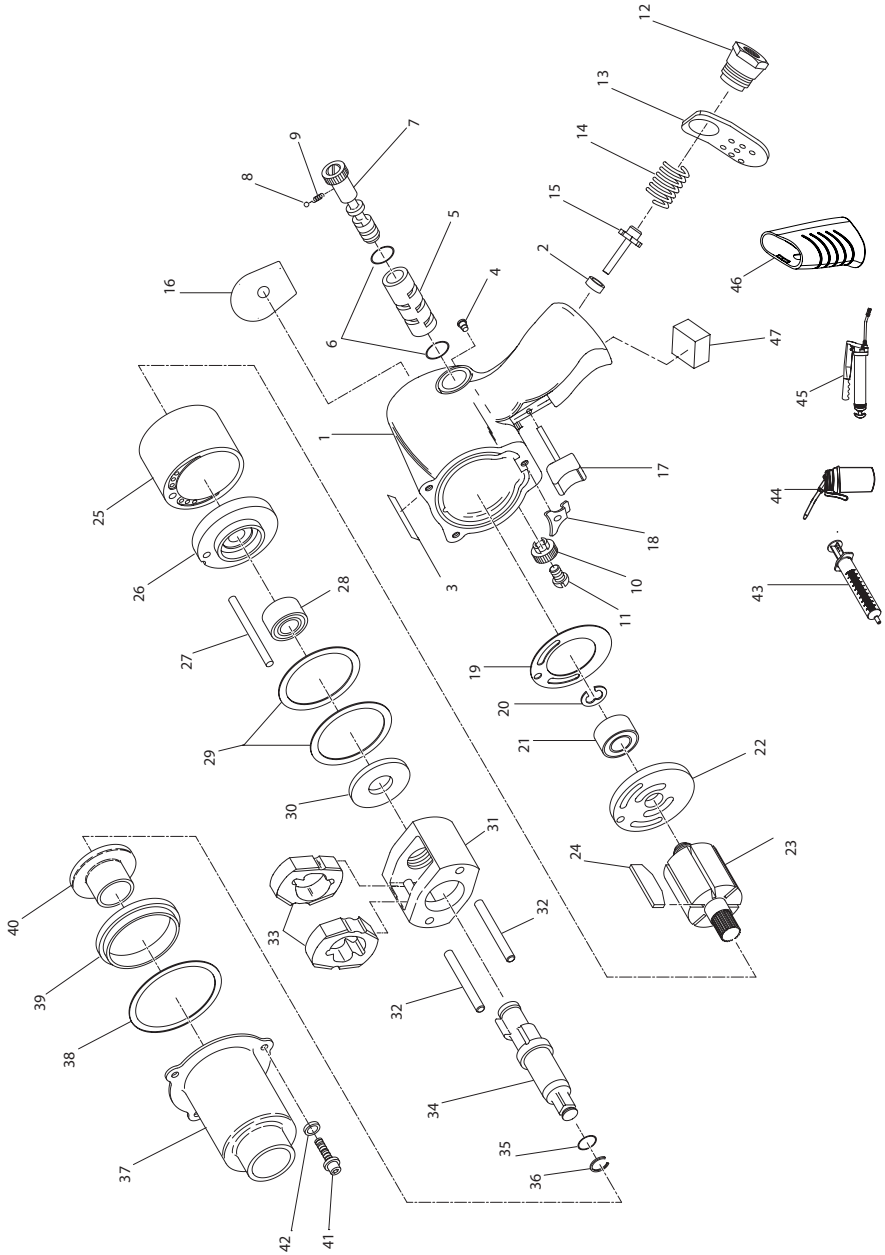


Models 231HA, 231HA-2 and 231R Series Air Impact Wrench - Exploded View



(Dwg. TP1970)



04581286
Edition 5
September 2016

Models 231HA, 231HA-2 and 231R Series Air Impact Wrench - Parts List

Item	Part Description	Part Number	Item	Part Description	Part Number
1	Motor Housing Assembly	231HP-A40	30	Hammer Frame Washer	231-706
2	Throttle Valve Seat	131-303	31	Hammer Frame Kit	231XP-A703
3	Warning Label	WARNING-2-99	32	Hammer Pin (2)	231-704
4	Grease Fitting	131-188	33	Hammer (2)	231XP-724
5	Reverse Valve Bushing Assembly	231-A330	34	Anvil Assembly	
6	Reverse Valve Bushing Seal (2)	PS3-67		for 231HA, 231R-G and 231R-R Models	231B-A626
7	Reverse Valve	131-329		for 231HA-2, 231R-G-2 and 231R-R-2 Models (2" Extended Anvil)	231B-A414
8	Reverse Valve Detent Ball	AV1-255	35	Retainer O-Ring	R1A-159
9	Reverse Valve Detent Spring	131-664	36	Socket Retainer	2135-425
10	Reverse Valve Knob	131-666	37	Hammer Case Assembly	131-A927
11	Reverse Valve Screw	131-665	38	Hammer Case Gasket	230-36
12	Inlet Bushing	131-565	39	Hammer Case Pilot	405-800
13	Exhaust Deflector	131-23	40	Hammer Case Bushing	705-941
14	Throttle Valve Spring	231G-51	41	Hammer Case Cap Screw (3)	131-638
15	Throttle Valve	131-50	42	Hammer Case Lock Washer (3)	131-637
16	Nameplate	231HA-301	43	Grease Gun	230-228
17	Trigger	231H-A93	44	Oil	405-M01
18	Trigger Retainer	131-656	45	Grease	105-4T
19	End Plate Gasket	PF800-283	*	Tune Up Kit (includes items 2, 6(2), 8, 9, 14, 15, 19, 20, 21, 24, 28, 35, 36, and 38)	231HP-TK1
20	Rear Rotor Bearing Retainer	131-118			
21	Rear Rotor Bearing	402-22			
22	Rear End Plate	131-12	*	Hammer Kit (for 231HA, 231R-G and 231R-R Models Standard Length) (includes items 33(2), 34, 38, 41(3), and 42(3))	231B-THK1
23	Rotor	231-53			
24	Vane (Set of 6 Vanes)	2131-42A-6			
25	Cylinder	131-3	*	Hammer Kit (for 231HA-2, 231R-G-2 and 231R-R-2 Models Extended Length) (includes items 33(2), 34, 38, 41(3), and 42(3))	231B-THK2
26	Front End Plate	131-11			
27	Cylinder Dowel	230-98	46#	Grip	231G-747
28	Front Rotor Bearing	4U-97	47	Exhaust Silencer	235-311
29	Motor Clamp Washer (2)	227-207			

* Indicates Not Illustrated.

Grip for use with original housing only for 231R-G, 231R-G-2, 231R-R and 231R-R-2 models. Not compatible with 231HA and 231HA-2 models.

Parts and Maintenance

When tool life has expired, it is recommended that the tool be disassembled, degreased and parts separated by material for proper recycling. Tool repair and maintenance should only be carried out by an authorized Service Center. Refer all communications to the nearest **Ingersoll Rand** office or distributor.

Related Documentation

For additional information, refer to:

Air Impact Wrench Product Safety Information Manual 04580916.

Air Impact Wrench Product Information Manual 47584133.

Manuals can be downloaded from ingersollrandproducts.com