



Retread Curing Systems



Curing products that consistently deliver a lower cost-per-cure
in the modern retreading system

Increase in productivity and decrease in mis-cures to improve the bottom line

Greater elasticity & high heat resistance

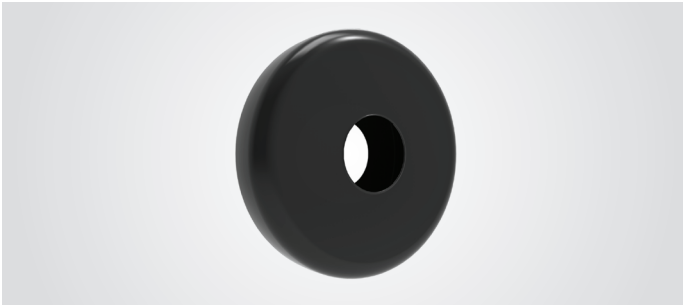


McGee Company
Since 1951

www.McGeeCompany.com
1-800-525-8888

ULTRA Series

Outside Envelopes



- Made with state of the art compression molding technology.
- Improved compound for superior heat tear resistance and thermal conductivity.
- Profile designed for optimum fit to the tyre.
- Reinforced valve area to prevent failure at the valve base area.
- Unique bead profile to reduce tear during installation.
- Lower cost per cure.

Catalogue No.	Description	OD (inch)	Section width (inch)	Bead to Bead (inch)	Qty. (per box)
DM31 UX* - 2	2906 - 24	29	06	24	2
DM32 UX* - 2	2906 - 21	29	06	21	2
DM34 UX* - 2	2906 - 19	29	06	19	2
DM60 UX* - 2	3206 - 26	32	06	26	2
DM61 UX* - 2	3206 - 23	32	06	23	2
DM62 UX* - 2	3206 - 21	32	06	21	2
DM63 UX* - 2	3206 - 19	32	06	19	2
DM75 UX* - 2	3507 - 29	35	07	29	2
DM76 UX* - 2	3507 - 26	35	07	26	2
DM77 UX* - 2	3507 - 23	35	07	23	2
DM80 UX* - 2	3807 - 30	38	07	30	2
DM81 UX* - 2	3807 - 25	38	07	25	2
DM82 UX* - 2	3807 - 22	38	07	22	2
DN03 UX* - 2	4008 - 32	40	08	32	2
DN05 UX* - 2	4008 - 27	40	08	27	2
DN08 UX* - 2	4008 - 22	40	08	22	2
DN09 UX* - 2	4010 - 34	40	10	34	2
DN23 UX* - 2	4208 - 28	42	08	28	2
DN24 UX* - 2	4208 - 25	42	08	25	2

Catalogue No.	Description	OD (inch)	Section width (inch)	Bead to Bead (inch)	Qty. (per box)
DN30 UX* - 2	4210 - 36	42	10	36	2
DN31 UX* - 2	4210 - 34	42	10	34	2
DN32 UX* - 2	4210 - 32	42	10	32	2
DN33 UX* - 2	4210 - 30	42	10	30	2
DN46 UX* - 2	4410 - 36	44	10	36	2
DN47 UX* - 2	4410 - 34	44	10	34	2
DN48 UX* - 2	4410 - 31	44	10	31	2
DN49 UX* - 2	4410 - 29	44	10	29	2
DN50 UX* - 2	4410 - 28	44	10	28	2
DN55 UX* - 2	4412 - 38	44	12	38	2
DN56 UX* - 2	4412 - 36	44	12	36	2
DN57 UX* - 2	4412 - 34	44	12	34	2
DN58 UX* - 2	4412 - 32	44	12	32	2
DN59 UX* - 2	4412 - 30	44	12	30	2
DN65 UX* - 2	4513 - 44	45	13	44	2
DN66 UX* - 2	4513 - 43	45	13	43	2
DN67 UX* - 2	4513 - 37	45	13	37	2
DN68 UX* - 2	4513 - 35	45	13	35	2
DN69 UX* - 2	4513 - 33	45	13	33	2

*X in Catalogue No. denotes

- 0 - no valve
- 1 - with narrow base valve
- 2 - with wide base valve
- 3 - with bent valve

Inside Envelopes



- Easy to fit enveloping system.
- Compression molded as a single unit.
- Ensures better finish on beads and other repairs in inner liner.
- Enhances envelope service life.
- Ensures a strong curing seal with added inner liner protection.

Catalogue No.	Description	OD (inch)	Section width (inch)	ID (inch)	Qty. (per box)
DP19 - 1	3808 - 20	38	8	20	1
DP20 - 1	3808 - 22.5	38	8	22.5	1
DP21 - 1	3808 - 24.5	38	8	24.5	1
DP24 - 1	4008 - 22.5	40	8	22.5	1

Description	OD (inch)	Section width (inch)	ID (inch)	Qty. (per box)
2907 - 19.5*	29	7	19.5	1
3208 - 19.5*	32	8	19.5	1
3508 - 22.5*	35	8	22.5	1
4008 - 24.5*	40	8	24.5	1
4208 - 24.5*	42	8	24.5	1
4210 - 22.5*	42	10	22.5	1
2705 - 16**	27	5	16	1
2907 - 16**	29	7	16	1
2907 - 17.5**	29	7	17.5	1
4410 - 22.5**	44	10	22.5	1

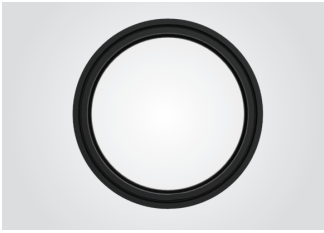
* Under development

** To be developed

FlexSeal System

- Increases productivity, envelope life and customer's bottom line.
- Seamlessly molded rubber bands to ensure a perfect seal.
- FlexSeal band and gasket is designed for better sealing on the bead area of the radial tyre for a uniform sealing system.

FlexSeal Gaskets



Cat. No.	Description	Qty. (per box)
DD11 F - 2	FG 1 - 16.5*	2
DD11 H - 2	FG 1 - 17.5	2
DD11 J - 2	FG 1 - 19.5	2
DD11 K - 2	FG 1 - 20	2
DD11 N - 2	FG 1 - 22.5	2
DD11 P - 2	FG 1 - 24.5	2

* Available from 2nd quarter, 2018

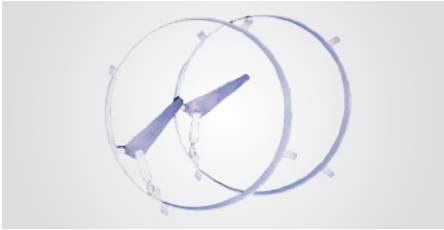
FlexSeal Bands



Cat. No.	Description	Qty. (per box)
MC41 F - 2	FB 1 - 16.5*	2
MC41 H - 2	FB 1 - 17.5	2
MC41 J - 2	FB 1 - 19.5	2
MC41 K - 2	FB 1 - 20	2
MC41 N - 2	FB 1 - 22.5	2
MC41 P - 2	FB 1 - 24.5	2

SnapSeals

- Adjusting bolts with heavy duty thread for better envelope seal.
- Ring tabs of exact length.
- Sliding shield on the outer ring body to prevent pinched envelopes.



Catalogue No.	Description	Quantity (per box)
MC36 C - 1	SS 1 - 15	1
MC36 F - 1	SS 1 - 16	1
MC36 H - 1	SS 1 - 17.5	1
MC36 J - 1	SS 1 - 19.5	1
MC36 K - 1	SS 1 - 20	1
MC36 N - 1	SS 1 - 22.5	1
MC36 P - 1	SS 1 - 24.5	1

Curing Tubes

- High quality heat resistant.
- Features a cured-in valve.



Catalogue No.	Description	Quantity (per box)	Catalogue No.	Description	Quantity (per box)
DI01 - 2	4.00 x 8	2	DI49 - 1	10.00 x 20	1
DI06 - 2	4.50 x 10	2	DI50 - 1	11.00 x 20	1
DI11 - 2	4.50 x 12	2	DI51 - 1	12.00 x 20	1
DI15 - 2	5.20 x 14	2	DI55 - 1	11.00 x 22.5	1
DI20 - 2	5.90 x 15	2	DI56 - 1	12.00 x 22.5	1
DI21 - 2	7.00 x 15	2	DI65 - 1	12.00 x 24	1
DI26 - 2	6.00 x 16	2	DI68 - 1	14.00 x 25	1
DI27 - 2	7.50 x 16	2	DI75 - 1	12.40 x 28	1
DI28 - 2	8.25 x 16	2	DI76 - 1	13.60 x 28	1
DI29 - 1	9.00 x 16	1	DI77 - 1	14.90 x 28	1
DI45 - 1	8.00 x 19	1	DI78 - 1	16.90 x 28	1
DI47 - 1	8.25 x 20	1	DI85 - 1	16.90 x 30	1
DI48 - 1	9.00 x 20	1			

Curing Rims

- Safety locking mechanism.
- Rigid construction.
- Available in a range of sizes.



Cat. No.	Description	Quantity (per box)	Cat. No.	Description	Quantity (per box)
MC70 1 - AA	CR 1 - 12 x 4	1	MC70 2 - AK	CR 2 - 20 x 7	1
MC70 1 - AB	CR 1 - 12 x 4.5	1	MC70 2 - AL	CR 2 - 20 x 7.5	1
MC70 1 - AC	CR 1 - 15 x 4	1	MC70 2 - AM	CR 2 - 20 x 8.5	1
MC70 2 - AD	CR 2 - 15 x 5.5	1	MC70 2 - AN	CR 2 - 20 x 9	1
MC70 2 - AE	CR 2 - 16 x 4.5	1	MC70 2 - AO	CR 2 - 20 x 10	1
MC70 2 - AF	CR 2 - 16 x 6	1	MC70 2 - AP	CR 2 - 22.5 x 10	1
MC70 2 - AG	CR 2 - 17.5 x 6.5	1	MC70 2 - AQ	CR 2 - 22.5 x 11.75	1
MC70 2 - AH	CR 2 - 19.5 x 7.5	1	MC70 2 - AR	CR 2 - 22.5 x 8.25	1
MC70 2 - AI	CR 2 - 20 x 6	1	MC70 2 - AS	CR 2 - 22.5 x 9	1
MC70 2 - AJ	CR 2 - 20 x 6.5	1	MC70 2 - AT	CR 2 - 24 x 8.5	1

Envelope Valves

- Provides excellent venting during cure cycle.
- Available with narrow and wide base options based on the tread type requirements.
- Easy to use and fits into any standard size envelope.
- Engineered to deliver superior air evacuation and longevity.



Catalogue No.	Description	Type
PA01 1	Narrow Base Valve	B
PA02 1	Wide Base Valve	A
PA03 1	Bent Valve	C

Wicking Pad

Rubber

- High elasticity compound eliminating tread deformations.
- More durable than cloth wick pads and can be used repeatedly.
- Eliminates use of venting poly underneath.
- Excellent thermal resistance, reducing aging for extended use.

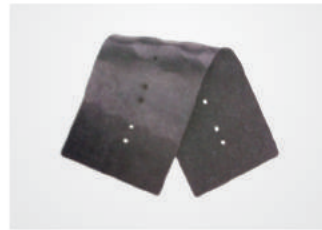


Cat. No.	Dimension (inch)	Size	Qty. (per box)
DL01 - 15	55.50x6.75	A	15
DL03 - 15	48.75x6.75	B	15
DL05 - 15	29.00x5.00*	C	15

* Available from 2nd quarter, 2018

Fabric Reinforced Rubber

- Molded rubber pad with grooves that wicks the air eliminating nylon wicking pads.
- No poly underneath.
- Can be attached to the underside of an envelope using a valve.



Cat. No.	Dimension	Qty. (per box)
DL21 - 15	6" W x 19" L**	15

Envelope Repair System

- Repair compound designed for maximum envelope repair life.
- Repair cement designed for maximum adhesion with special compound.
- Envelope repair press with heat and pressure control for maximum repair cured adhesion.



Catalogue No.	Description	Quantity
EA40 - 2.2 Lbs	Envelope Repair Gum	2.2 Lbs
CH08 - 8.4 Oz	Flammable Envelope Repair Cement with Brush	8.4 Oz
CI28 - 32 Oz	Flammable Rubber Buffer	32 Oz
MC40 1 - X*	Envelope Spot Vulcaniser VE 1	
MA42	Envelope Repair Table (image not shown)	
*X in Cat. No. denotes power supply specifications (V / Hz / ph)		D - 110 / 50/60 / 1 E - 220 / 50/60 / 1

Related Products



Plastic Staples & Staplers



Perforated Poly



Envelope Lube



Venting Tape