



READ INSTRUCTIONS THOROUGHLY BEFORE OPERATING



800.223.4540

3451 S. 40th Street
Phoenix, AZ 85040
602.437.5020

www.tsissg.com
info@tsissg.com
Fax 602.437.5025

May 9, 2017

GENERAL INFORMATION

General: Remove contents from box and assemble as shown below in Fig. 1.
Read and follow instructions for optimum use.

Overview: The CH-22 Multi-Tire Changer accommodates tires ranging from 4" to 16.5" in diameter. This is made possible by using different center posts and varying the position of the jaw clamps.

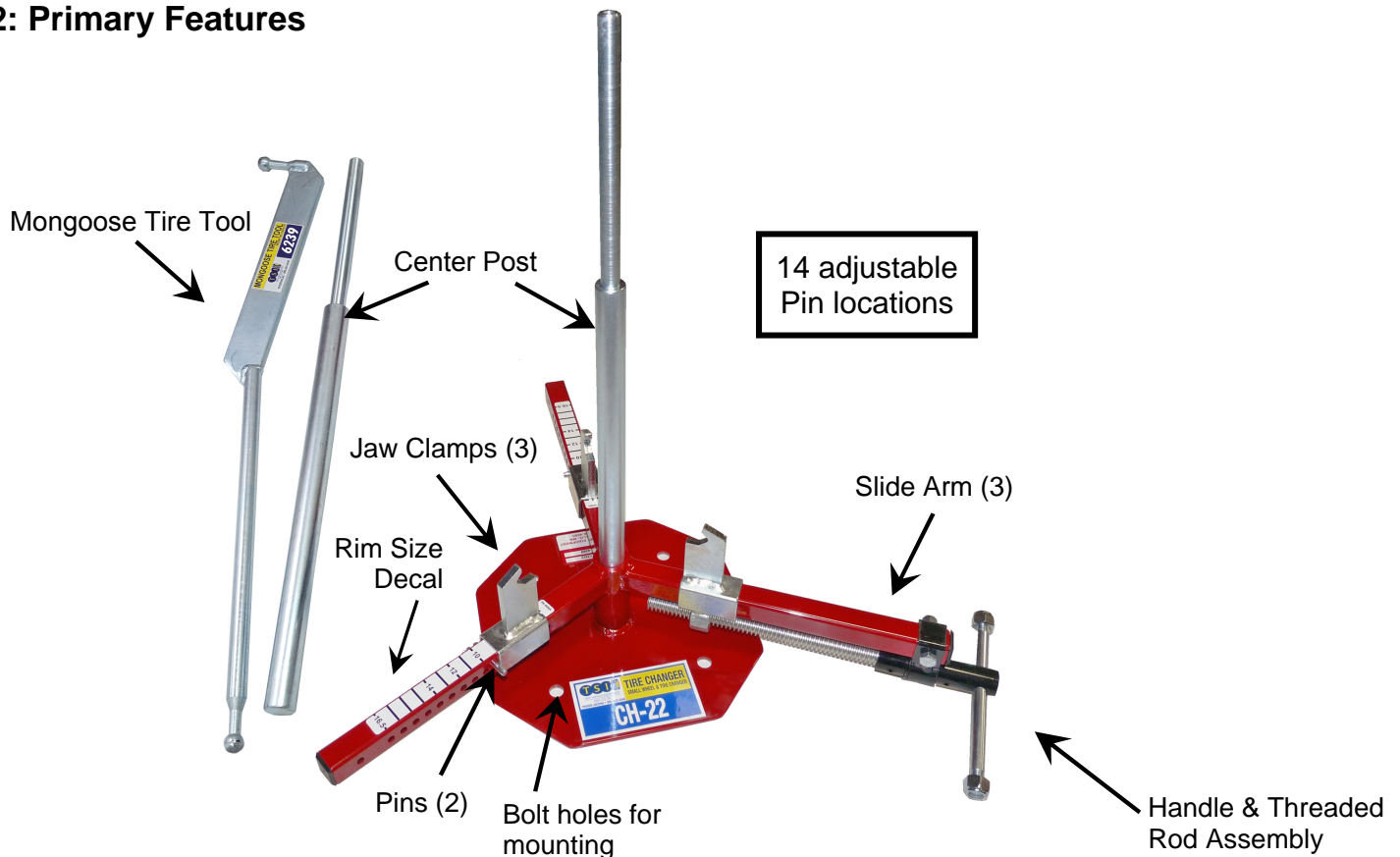
With the assortment of other available options it gives the Multi-Tire Changer an even broader range of tire size capabilities to work with along with increasing a users operational flexibility.

WARNING - WEAR SAFETY GLASSES

USE CAUTION! Machine can cause fingers or hands to be pinched.
Use a suitable tire and tube lubricant for mounting and removal.

CH-22: Primary Features

Fig. 1



Unit comes with the following: (See cover)

These two Center Posts (with four shaft sizes) are provided for either bearing center or hub center wheels.

- PN 10950 Small Center Post
24" Long with 18" being 3/4" Diameter. Final 8" is 1/2" Diameter
- PN 10951 Large Center Post
24" Long with 18" being 1" Diameter. Final 8" is 5/8" Diameter
- Mongoose Tire Tool

INSTRUCTIONS

Set-Up

One of several design features to the CH-22 includes options to mount it.

For best results TSI has developed a Platform and Stand to compliment the CH-22 function and range. The Platform (TSI PN 6192) provides a non-slip footing surface for a service technician. Likewise the CH-23 Stand puts the work being done with the CH-22 at a good height along with including a very handy Bead Breaker and tool storage center.

Bolt them together (using the bolt holes on Pg. 2 Fig. 1) and bolt the platform to level ground for a trouble free work environment.

It is possible to bolt the CH-22 Multi-Tire Changer to an alternative surface. Use the bolt holes (Pg. 2 Fig. 1) for bolting to the CH-23 Tire Stand and fasten to a suitable level location preferably in a clean working environment with necessary access.

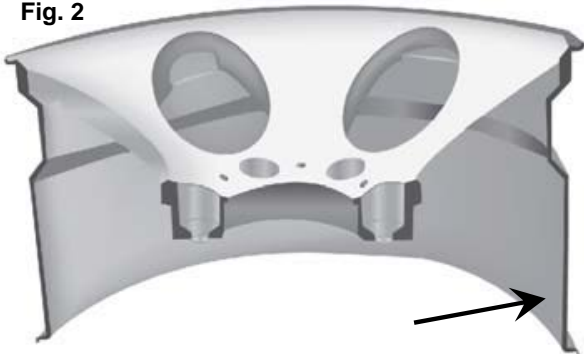
See back cover of this manual for Options & Accessories.

Tire bead must be broke loose before using the CH-22 Multi-Tire Changer

Use

Prepare the machine to put a tire on it. Determine what size tire is being serviced and set the jaw clamps (see Fig. 3 & 4) accordingly. **Note** Fig. 2 for rim position.

Fig. 2



For best results taking a tire off a rim or putting one on, have the longer bead seated area of the rim facing down for the Jaw Clamps to lock onto. (See Fig. 2)

Most the time the valve stem will be up and accessible. If not, mount the tire and later flip it to connect an air hose to the valve stem for adding air.



Fig. 3

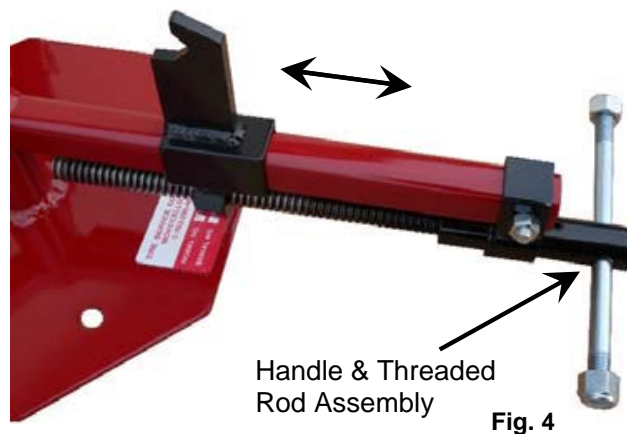


Fig. 4

Put the pins in matching holes on each of the slide arms with the two free-moving jaw clamps (see Fig. 2). Slide the jaw clamps against the pins.

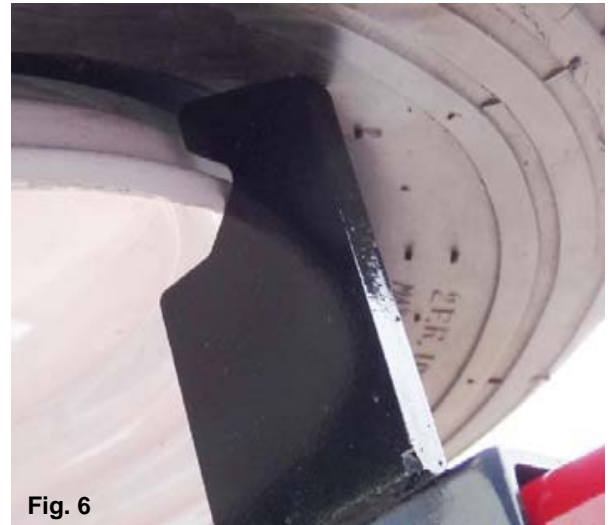
Adjust the handle & threaded rod assembly jaw clamp (see Fig. 3) back so the tire flange clears each of the clamping teeth on all three jaw clamps.

INSTRUCTIONS (CONTINUED)

Ideally the rim should be centered over the center hole on the Tire Changer. Before cinching the rim tight, determine which center post to use. If the wheel has a hole through it large enough to use the large center post, use it. If it's seated with a bearing (see Fig. 5) use the appropriate sized shaft 1/2", 5/8" or 3/4" from either of the center posts available.

Now tighten the adjusting clamp to secure the wheel.

Tip: Make sure to secure the edge of the rim (see Fig. 6).



KEEP MACHINE CLEAN AND FREE OF DEBRIS. DON'T WEAR LOOSE CLOTHING.

Lubricate the tire and entire rim flange area around the tire before mounting or dismounting the tire (see yellow arrow in Fig. 5).

Make sure the tire bead is in the drop center of the rim for this process. Press and hold with one hand while prying the Mongoose Tire Tool around the center post.



Demount deflated tire using the "rod end" of the Mongoose Tire Tool (**see Fig. 7**). The ball end is pushed under the top bead and rested on the rim as illustrated. While holding the Mongoose Tool against the center post with one hand, and lifting up on the tire with the other, rotate the tool full circle. Demount the bottom bead the same way.

Vary the angle of the Mongoose Tire Tool against the center post can achieve better results for each user based on the different rim or tire sizes and the shapes of each.



Fig. 8

Mounting the tire uses the "flat-end" of the Mongoose Tire Tool (**see Fig. 8**). While applying pressure to the low side of the tire (always facing the operator) place the ball-end between rim and bead. With the flat side against the center post rotate the tool full circle for both bottom and top beads.

Remember to use lubrication on the rim and tire bead.

Mount - Demount *with optional accessories*



Fig. 9

PN 12489 Demount

To protect chrome or aluminum rims from tool scrapes use this handy plastic accessory with the regular size Mongoose Tire Tool or the the Mini Mongoose Tire Tool.

Hold the Demount tab on the Mongoose Tire Tool. Push down and into the tire flange/bead area (**see Fig. 9**).



Shove the Demount tab into the rim flange area (**see Fig. 10**). With your other hand guide the tire beads into the 'drop center' of the rim opposite the side where you've placed the Mongoose Tire Tool and demount tab. Pry up on the Mongoose Tire Tool and demount tab in an arced motion so they rest on the rim as shown in Fig. 11. With the tool against the center post rotate them in a circular motion around the post until the tire is free from the rim. Do this for both tire beads until the tire is completely demounted.

USE LUBRICANT AND DON'T PINCH YOUR HANDS OR FINGERS

Mounting tire

Fig. 12 displays PN 12488 Mount tab with the Mongoose Tire Tool. Place the tire over the rim and plunge the two tools over the edge of the rim (**see Fig. 13**) use the Mongoose Tire Tool to pry against the center post in a circular motion to mount the tire.



Do this to mount both sides of the tire. Upon mounting the tire wipe off the lubricant and clean the tools and tire.

Loosen the Handle and Threaded Rod Assembly to remove the tire.

SPECIFICATIONS

Specifications

The CH-22 weighs 26 pounds packaged. Triangular in shape it takes up roughly a 24" square area by 7" tall fully assembled (without the center posts.) Ideally an operator needs free mobility all the way around for best results.

COMPLETE TIRE CHANGING STATION



Parts sold separately

The CH-22 Multi-Tire Changer and CH-23 Stand with Floor Plate



CH-23 Stand
w/ Bead
Breaker



Floor Plate
PN 6192



Mini Mongoose
PN CH-4M



Wheel Protectors
12488 / 12489

www.tsissg.com

CH-22 MULTI-TIRE CHANGER



800.223.4540

3451 S. 40th Street
Phoenix, AZ 85040
602.437.5020

www.tsissg.com
info@tsissg.com
Fax 602.437.5025