

# Wheel Mounting Procedures

Remove rust and dirt : Inspect all components : Snug wheel nuts : Torque to specification

## Remove rust and dirt from all mating surfaces



Wheel Openings and Pilot Pads



SC15563 Wire Brush & Q/C adapter



Wheel Studs



SC100 Stud Cleaner  
SC223QC Air Drill



Wheel Mating Surfaces



SC14404 2 3/4" Abrasive Poly Brush



Hub and Brake Drum Face



SC14404 with Q/C Adapter



Wheel Nut and Flanges



44063 Wood Handle Brush



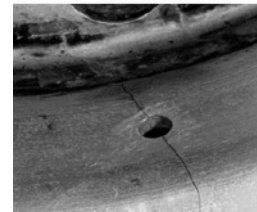
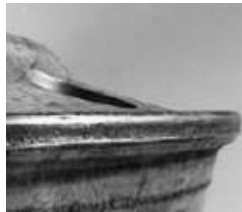
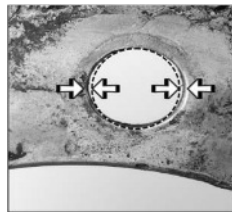
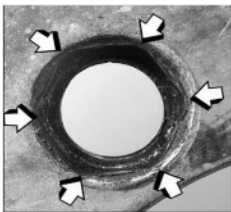
The SC100 Stud Cleaner uses three long lasting heavy duty carbon steel brushes to clean rust and debris from the stud threads to ensure proper torque.



SC10157 1" Abrasive Poly Brush



## Inspect all Components for Wear and Damage

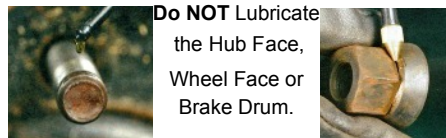
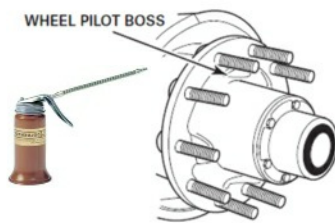


New Stud



Worn Stud

## Lubricate Mounting Pads, Studs and Nuts \*\*\* Uni-Mount Only \*\*\*



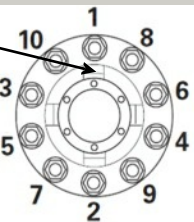
Do NOT Lubricate the Hub Face, Wheel Face or Brake Drum.  
TIA recommends: lubricate Hub-Pilot studs and nuts with 2 drops 30w oil before tightening

## Pre-Torque Wheel Nuts to 65 ft lbs

Rotate Wheel Mount Pad to 12 o'clock



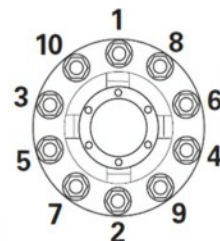
75520 65# torque limiting extension



## Tighten Wheel Nuts to Final Torque



Short Shank 1" dr Impact with torque limiting extensions



NEW OSHA 29 CFR 1910.177 wheel mounting procedure manual and charts. These are required by OSHA to be displayed in truck tire service areas or carried in road service trucks \$5.95 each. One FREE with Torque wrench, Torque Set or Stud Cleaner.



4AR1 Break Back Torque Wrench